

NLAF Working Group on Collaborative Service Planning

Discussion Paper on Proposed Metropolitan Catchments for Service Planning – December 2019

The purpose of this consultation is to seek the views of legal assistance service providers on proposed catchments for collaborative service planning across metropolitan Sydney, NSW. Tab A has detailed maps of the proposed catchments.

The objective is to develop an agreed set of catchments to be used for analysing legal needs and unmet demand, and for organisations to work together in service planning, across the catchments. While this consultation is targeted at legal assistance sector providers, other organisations and individuals are welcome to provide comments.

We acknowledge that each legal assistance service has pre-existing catchments and we have detailed these at Tab B.

Feedback is sought on whether the proposed metropolitan catchments make sense from a local perspective. Tab A has detailed maps of the proposed catchments and a suburb to catchment table.

Please provide comments to the NLAF Working Group via the Planning and Review Unit at Legal Aid NSW (c/o naomi.cheetham@legalaid.nsw.gov.au Tel: 02 9134 9326) by **Friday, 31 January 2020**.

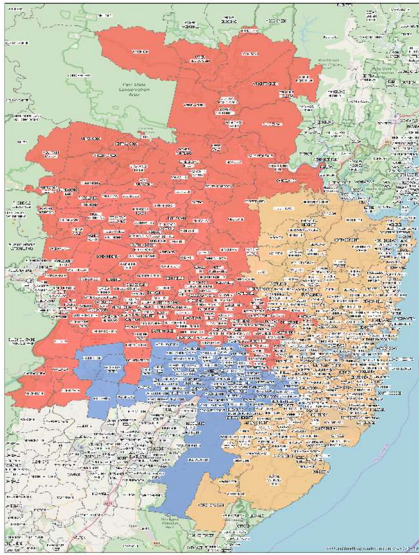
Proposed Catchments

The NSW Legal Assistance Forum (NLAF) Working Group on Collaborative Service Planning are proposing to have three metropolitan catchments in Sydney.

Sydney Central

Sydney South West

Sydney West

		Sydney Central catchment	Sydney South West catchment	Sydney West catchment
	Aboriginal Legal Service	Haymarket Redfern		Parramatta St Marys
	Community Legal Centres (generalist)	Redfern Inner City Marrickville Kingsford	Sydney South West	Western Sydney
	Legal Aid NSW	Haymarket Burwood Sutherland	Bankstown Fairfield Liverpool	Parramatta Blacktown Penrith
	Courts	Downing Centre District and Local Family Law Court, Central Surry Hills Waverley Newtown Burwood Sutherland Manly Hornsby	Bankstown Fairfield Liverpool Campbelltown/ Goulburn catchment: Picton Camden Campbelltown Illawarra catchment: Family Law Court Wollongong	Family Law Court, Parramatta Parramatta District & Local Blacktown Mt Druitt Penrith Windsor

Why are we creating metropolitan catchments?

Legal assistance service providers are involved in many effective collaborative service planning programs and projects across NSW, including the Cooperative Legal Service Delivery (**CLSD**) Program and the Outer Western Sydney Legal Service (OWsLS) Group.

In addition, the National Partnership Agreement on Legal Assistance Services 2015-2020 (**NPA**) (Tab C) and the Indigenous Legal Assistance Program (**ILAP**) (Tab C) require legal assistance service providers to undertake collaborative service planning to coordinate and maximise service delivery. In the current NPA, no funding has been provided for collaborative service planning, instead it is expected this work is subsumed into current budgets.

The NSW Legal Assistance Forum Working (NLAF) Group on collaborative service planning is creating new metropolitan catchments to provide greater clarity for future collaborative service planning between legal assistance services. New catchments covering rural and regional NSW have already been settled by the NLAF Working Group following a consultation process.

NSW Legal Assistance Forum Working (NLAF) Group

NLAF is an interagency forum that brings together key legal service providers across government, non-government and private sectors. Its members include the Aboriginal Legal Service NSW/ACT Ltd (ALS), Community Legal Centres NSW (CLCNSW), the NSW Department of Communities and Justice, Justice Connect, LawAccess NSW, the Law and Justice Foundation of NSW (LJF), Law Society of NSW, Legal Aid NSW, Legal Information Access Centre, NSW Bar Association, and the Public Interest Advocacy Centre. NLAF meets quarterly, and aims to facilitate access to justice for socially and economically disadvantaged people. It convenes working groups to examine key or emerging issues in detail.

In August 2018, a NSW Legal Assistance Forum (**NLAF**) Working Group was established to develop a more comprehensive approach to collaborative service planning in NSW that will:

- align with the NPA and ILAP requirements
- focus on the delivery of legal assistance services to priority clients
- be evidenced based, using a legal needs analysis and legal assistance service data to identify legal need and the range of existing services, and
- focus on coordinating and maximising the reach of services and ensure that services are directed where they are most needed.

The NLAF Working Group meets on a monthly basis and comprises representatives from Legal Aid NSW, CLCNSW, the ALS, LawAccess NSW, the LJF, and the Department of Communities and Justice.

The NLAF Working Group has an initial work plan which includes:

- agreeing geographic catchments for NSW
- undertaking a legal needs analysis by catchment
- mapping existing legal assistance services within catchments
- establishing regional working groups for each catchment
- identifying the initial service planning priorities for regional working groups
- organising quarterly meetings for the working groups.

This process aims for a consistent approach to be adopted by legal assistance service providers, and for any gaps and/or duplication in service delivery to be identified and addressed through the collaborative service planning process.

Ideally, the new catchment areas for collaborative service planning in NSW should:

- be based on logical communities
- align with existing government boundaries and ABS statistical areas
- include at least two service providers in each catchment area to allow for collaboration (this could include services provided via outreach services)
- incorporate existing CLSD partnerships within the catchment area boundaries where relevant
- include court circuits / courts serviced by the relevant offices in the catchment area, and
- recognise existing collaborations and outreach arrangements where possible

The collaborative service planning process will focus on better service planning and use data to inform appropriate allocation of resources. It is not intended to be directly linked with the allocation of financial resources within the legal assistance sector. At this stage, there is no specific funding tied to collaborative service planning.

What are the proposed catchments?

- 3 catchments in metropolitan Sydney
 - Sydney Central
 - Sydney South West
 - Sydney West
- A suburb to catchment concordance table that lists the suburbs in each catchment is in the spread sheet attached.

How were the catchments developed?

Secretariat staff from the NLAf working group visited each metropolitan Legal Aid NSW office location and generalist Community Legal Centre during August, September and October. At those visits, we met with Solicitors In Charge and Principal Solicitors to understand:

- what areas and courts each agency currently delivers services to, and
- what areas and agencies they currently collaborate with and in.

We also sought advice on:

- where clients will travel from and what transport routes they are likely to use, and
- which road and/or suburb might form a natural or sensible boundary between one catchment and another.

We mapped the catchments by suburb, which is more granular than postcode or Local Government Area (LGA). Where possible we tried to keep suburbs belonging to LGAs in the one catchment. This will assist in future mapping exercises where we may wish to analyse legal need and social disadvantage by broader geographic areas such as LGAs compared with smaller geographic areas such as suburbs.

What does it mean for our current service?

Importantly, collaborative service planning and agreeing upon defined catchments will NOT impact which clients can come to you and who you choose to service. These will not change the existing catchment areas of community legal centres for service delivery.

Under the proposed framework, agencies who deliver services in a catchment will be limited to attend quarterly meetings in the catchment to consider and discuss legal needs data, provide input and make decisions about where legal services are delivered and whether any changes or new services can be accommodated.

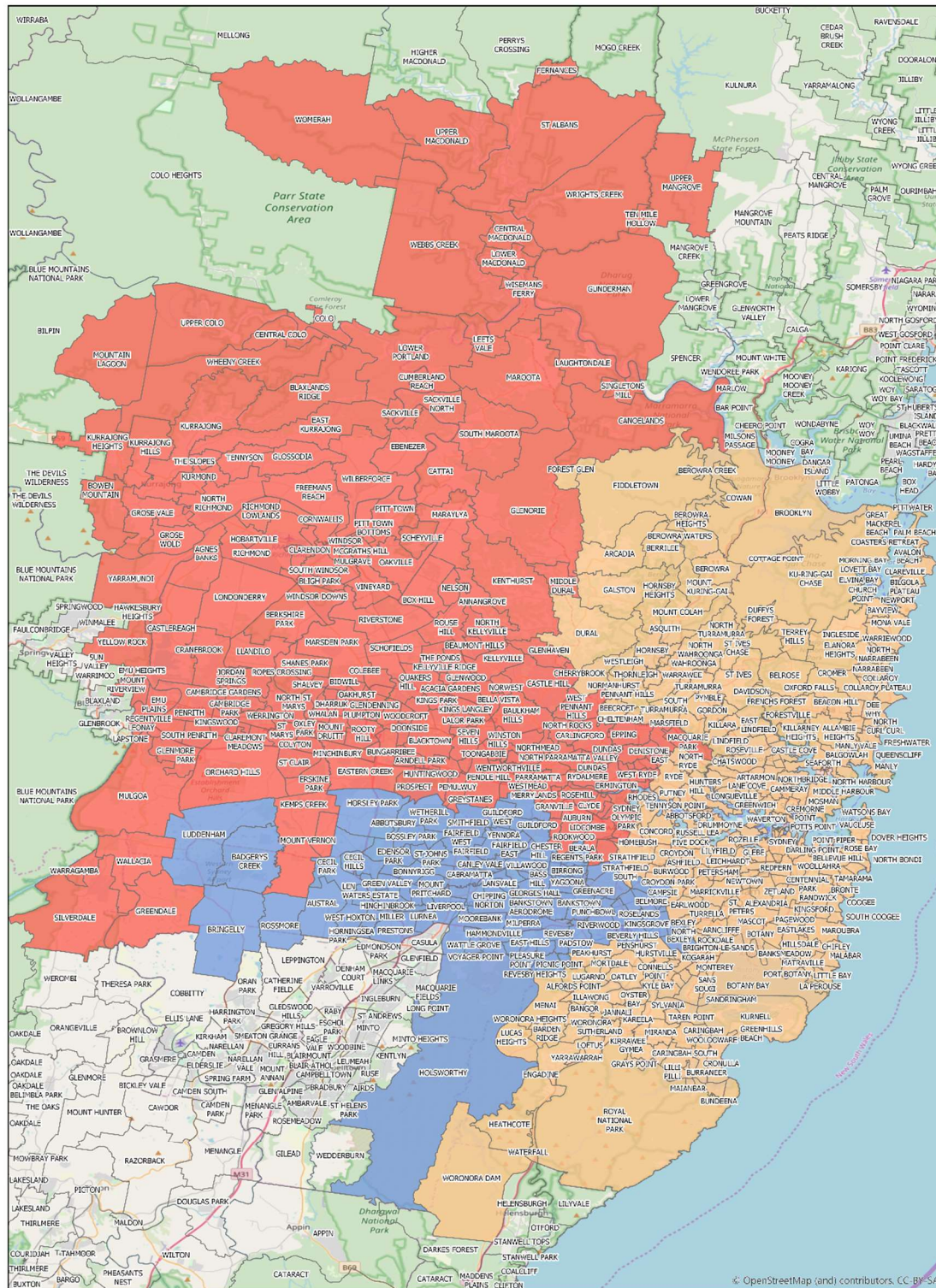
If your service is across more than one catchment, you would be invited to attend quarterly meetings in each catchment.

The aim of this process is to increase the legal assistance sector's capacity to provide the greatest coverage to the most clients in each catchment. As noted above, at this stage there is no specific funding allocated for collaborative service planning.

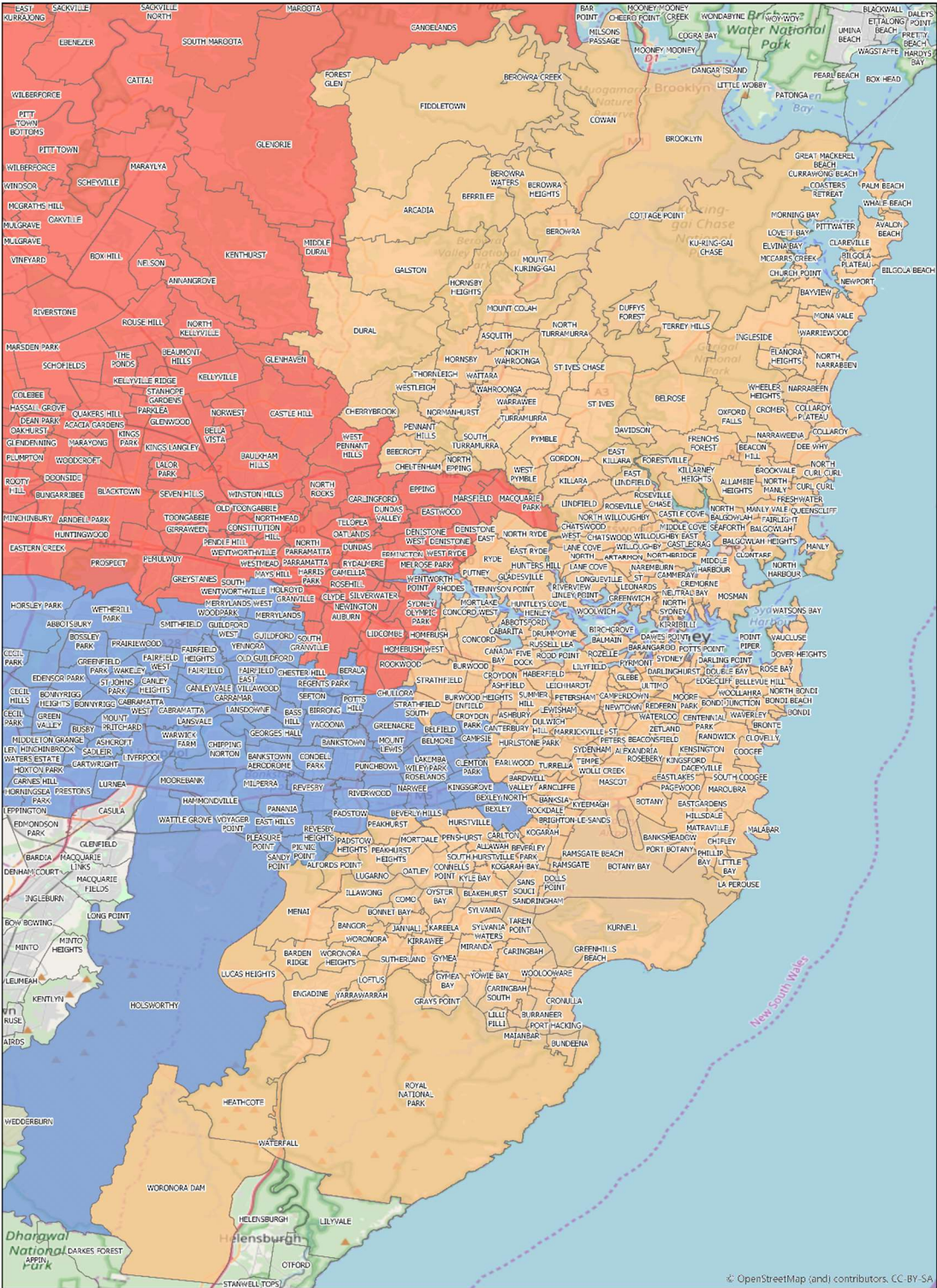
How can I provide feedback and input into the final version?

Respond by email or telephone to Naomi Cheetham on 02 9134 9326 or naomi.cheetham@legalaid.nsw.gov.au by **Friday 31 January 2020**.

TAB A - Metropolitan Sydney catchments

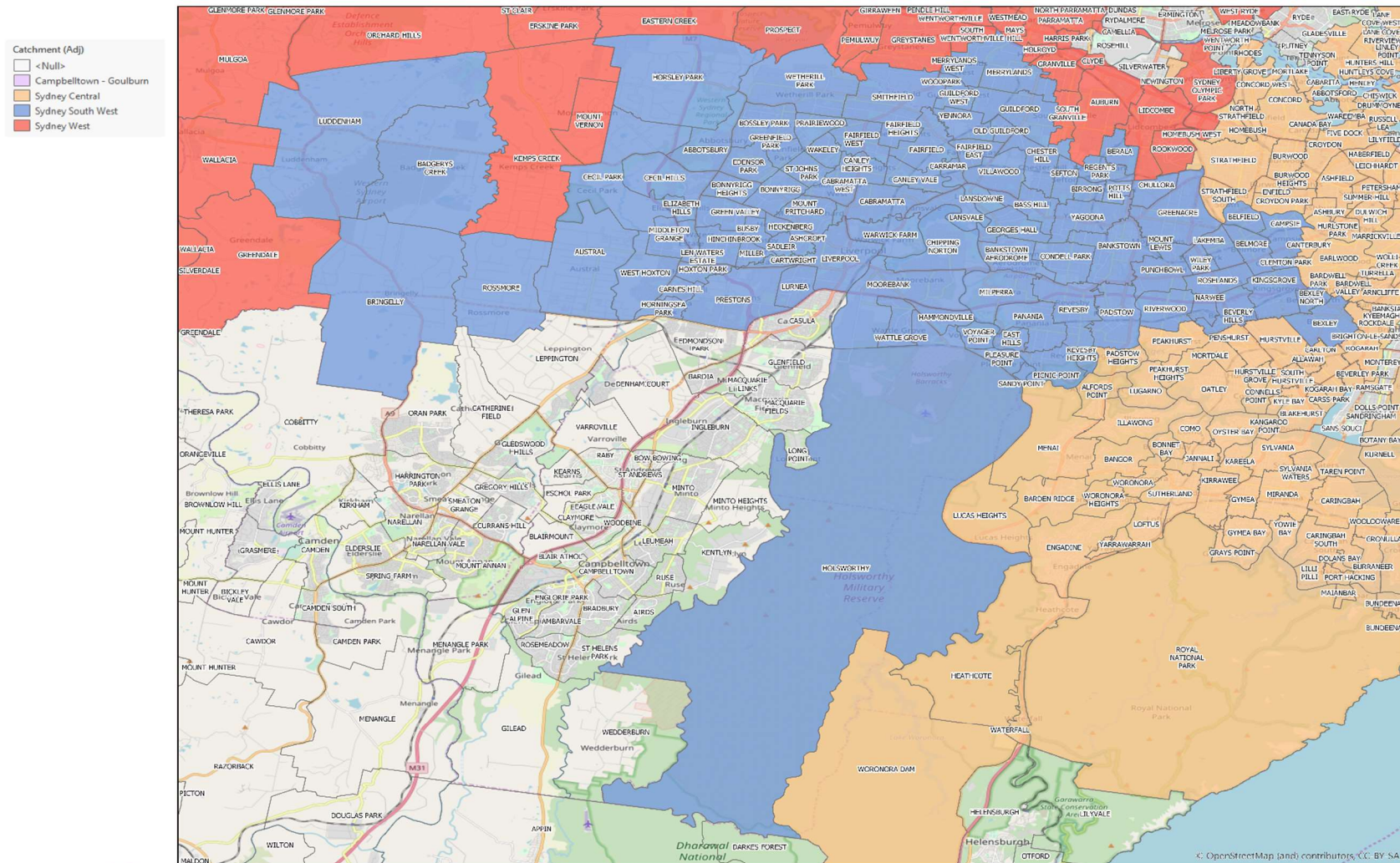


Sydney Central catchment

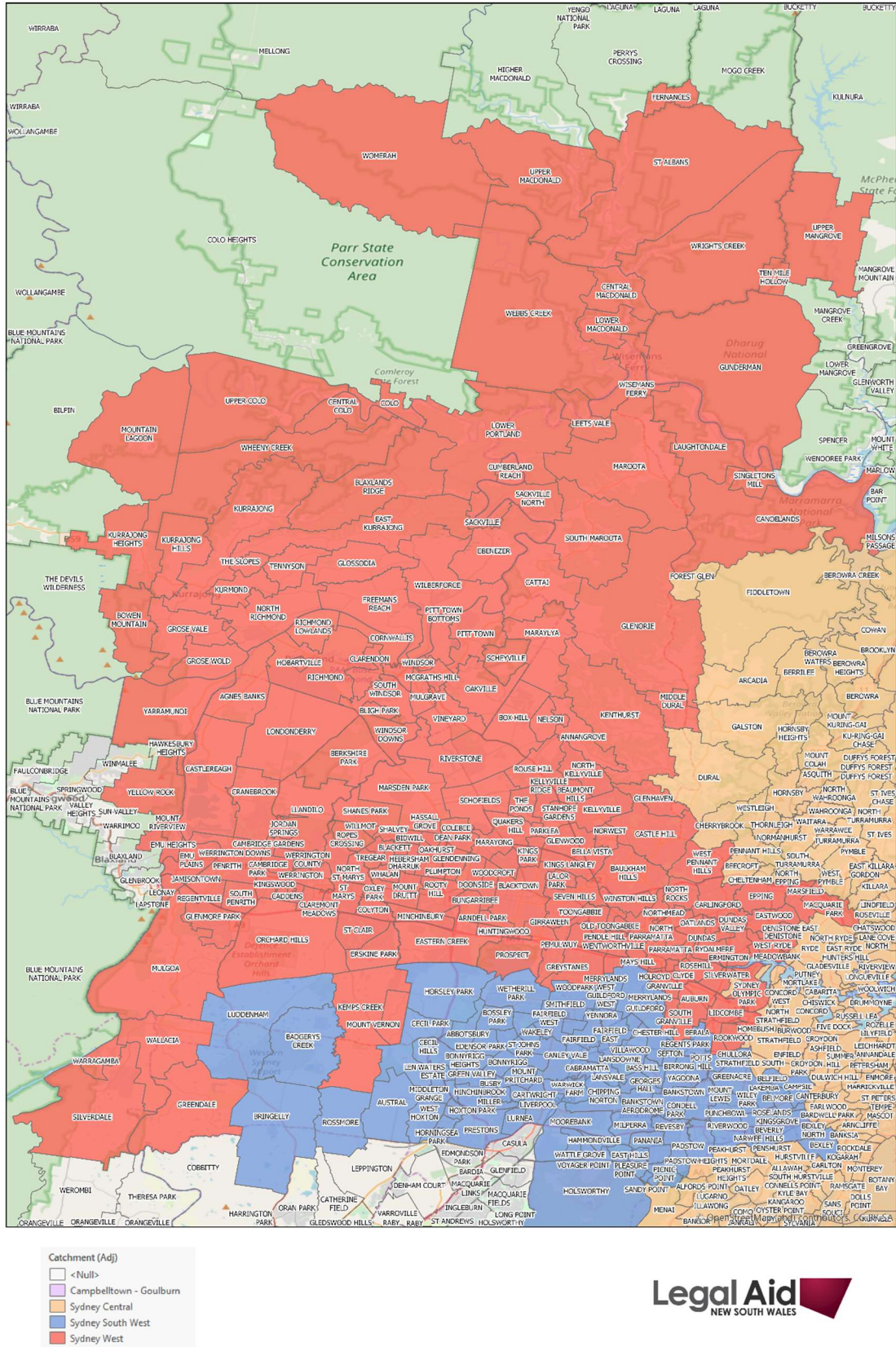


- Catchment (Adj)
- <Null>
 - Campbelltown - Goulburn
 - Sydney Central
 - Sydney South West
 - Sydney West

Sydney South West catchment



Sydney West catchment



Sydney Central catchment – suburb list

ABBOTSFORD	BEACON HILL	BROOKVALE	CHURCH POINT	DARLING POINT
ALEXANDRIA	BEACONSFIELD	BUNDEENA	CLAREVILLE	DARLINGHURST
ALFORDS POINT	BEECROFT	BURRANEER	CLONTARF	DARLINGTON
ALLAMBIE HEIGHTS	BELLEVUE HILL	BURWOOD	CLOVELLY	DAVIDSON
ALLAWAH	BELROSE	BURWOOD HEIGHTS	COASTERS RETREAT	DAWES POINT
ANNANDALE	BEROWRA	CABARITA	COLLARROY	DEE WHY
ARCADIA	BEROWRA CREEK	CAMMERAY	COLLARROY PLATEAU	DOLANS BAY
ARNCLIFFE	BEROWRA HEIGHTS	CAMPERDOWN	COMO	DOLLS POINT
ARTARMON	BEROWRA WATERS	CANADA BAY	CONCORD	DOUBLE BAY
ASHBURY	BERRILEE	CANTERBURY	CONCORD WEST	DOVER HEIGHTS
ASHFIELD	BEVERLEY PARK	CARINGBAH	CONNELLS POINT	DRUMMOYNE
ASQUITH	BILGOLA BEACH	CARINGBAH SOUTH	COOGEE	DUFFYS FOREST
AVALON BEACH	BILGOLA PLATEAU	CARLTON	COTTAGE POINT	DULWICH HILL
BALGOWLAH	BIRCHGROVE	CARSS PARK	COWAN	DURAL
BALGOWLAH HEIGHTS	BLAKEHURST	CASTLE COVE	CREMORNE	EARLWOOD
BALMAIN	BONDI	CASTLECRAG	CREMORNE POINT	EAST KILLARA
BALMAIN EAST	BONDI BEACH	CENTENNIAL PARK	CROMER	EAST LINDFIELD
BANGOR	BONDI JUNCTION	CHATSWOOD	CRONULLA	EAST RYDE
BANKSIA	BONNET BAY	CHATSWOOD WEST	CROWS NEST	EASTGARDENS
BANKSMEADOW	BOTANY	CHATSWOOD WEST	CROYDON	EASTLAKES
BARANGAROO	BOTANY BAY	CHELTENHAM	CROYDON PARK	EDGECLIFF
BARDEN RIDGE	BREAKFAST POINT	CHERRYBROOK	CURL CURL	ELANORA HEIGHTS
BARDWELL PARK	BRIGHTON-LE-SANDS	CHIFLEY	CURRAWONG BEACH	ELIZABETH BAY
BARDWELL VALLEY	BRONTE	CHIPPENDALE	DACEYVILLE	ELVINA BAY
BAYVIEW	BROOKLYN	CHISWICK	DANGAR ISLAND	ENFIELD

Sydney Central catchment – suburb list

ENGADINE	HENLEY	HENLEY	KURNELL	MANLY	NARRAWEENA
ENMORE	HILLSDALE	HILLSDALE	KURRABA POINT	MANLY VALE	NEUTRAL BAY
ERSKINEVILLE	HOMEBUSH	HOMEBUSH	KYEEMAGH	MAROUBRA	NEWPORT
EVELEIGH	HORNSBY	HORNSBY	KYLE BAY	MARRICKVILLE	NEWTOWN
FAIRLIGHT	HORNSBY HEIGHTS	HORNSBY HEIGHTS	LA PEROUSE	MASCOT	NORMANHURST
FIDDLETOWN	HUNTERS HILL	HUNTERS HILL	LANE COVE	MATRAVILLE	NORTH BALGOWLAH
FIVE DOCK	HUNTLEYS COVE	HUNTLEYS COVE	LANE COVE NORTH	MCCARRS CREEK	NORTH BONDI
FOREST GLEN	HUNTLEYS POINT	HUNTLEYS POINT	LANE COVE WEST	MCCMAHONS POINT	NORTH CURL CURL
FOREST LODGE	HURLSTONE PARK	HURLSTONE PARK	LAVENDER BAY	MENAI	NORTH EPPING
FORESTVILLE	HURSTVILLE	HURSTVILLE	LEICHHARDT	MIDDLE COVE	NORTH MANLY
FRENCHS FOREST	HURSTVILLE GROVE	HURSTVILLE GROVE	LEWISHAM	MILLERS POINT	NORTH NARRABEEN
FRESHWATER	ILLAWONG	ILLAWONG	LIBERTY GROVE	MILSONS PASSAGE	NORTH RYDE
GALSTON	INGLESIDE	INGLESIDE	LILLI PILLI	MILSONS POINT	NORTH STRATHFIELD
GLADESVILLE	JANNALI	JANNALI	LILYFIELD	MIRANDA	NORTH SYDNEY
GLEBE	KANGAROO POINT	KANGAROO POINT	LINDFIELD	MONA VALE	NORTH TURRAMURRA
GORDON	KAREELA	KAREELA	LINLEY POINT	MONTEREY	NORTH WAHROONGA
GRAYS POINT	KENSINGTON	KENSINGTON	LITTLE BAY	MOORE PARK	NORTH WILLOUGHBY
GREAT MACKEREL BEACH	KILLARA	KILLARA	LOFTUS	MORNING BAY	NORTHBRIDGE
GREENHILLS BEACH	KILLARNEY HEIGHTS	KILLARNEY HEIGHTS	LONGUEVILLE	MORTDALE	NORTHWOOD
GREENWICH	KINGSFORD	KINGSFORD	LOVETT BAY	MORTLAKE	OATLEY
GYMEA	KIRRAWEE	KIRRAWEE	LOVETT BAY	MOSMAN	OXFORD FALLS
GYMEA BAY	KIRRIBILLI	KIRRIBILLI	LUCAS HEIGHTS	MOUNT COLAH	OYSTER BAY
HABERFIELD	KOGARAH	KOGARAH	LUGARNO	MOUNT KURING-GAI	PADDINGTON
HAYMARKET	KOGARAH BAY	KOGARAH BAY	MAIANBAR	NAREMBURN	PADSTOW HEIGHTS
HEATHCOTE	KU-RING-GAI CHASE	KU-RING-GAI CHASE	MALABAR	NARRABEEN	PAGEWOOD

Sydney Central catchment – suburb list

PALM BEACH	ROSEBERY	SYDENHAM	WEST PYMBLE
PEAKHURST	ROSEVILLE	SYDNEY	WESTLEIGH
PEAKHURST HEIGHTS	ROSEVILLE CHASE	SYLVANIA	WHALE BEACH
PENNANT HILLS	ROYAL NATIONAL PARK	SYLVANIA WATERS	WHEELER HEIGHTS
PENSHURST	ROZELLE	TAMARAMA	WILLOUGHBY
PETERSHAM	RUSHCUTTERS BAY	TAREN POINT	WILLOUGHBY EAST
PHILLIP BAY	RUSSELL LEA	TEMPE	WOLLI CREEK
POINT PIPER	RYDE	TENNYSON POINT	WOLLSTONECRAFT
PORT BOTANY	SANDRINGHAM	TERREY HILLS	WOOLLAHRA
PORT HACKING	SANS SOUCI	THE ROCKS	WOOLLOOMOOLOO
POTTS POINT	SCOTLAND ISLAND	THORNLEIGH	WOOLOOWARE
PUTNEY	SEAFORTH	TURRAMURRA	WOOLWICH
PYMBLE	SOUTH COOGEE	TURRELLA	WORONORA
PYRMONT	SOUTH HURSTVILLE	ULTIMO	WORONORA DAM
QUEENS PARK	SOUTH TURRAMURRA	VAUCLUSE	WORONORA HEIGHTS
QUEENSCLIFF	ST IVES	WAHROONGA	YARRAWARRAH
RAMSGATE	ST IVES CHASE	WAITARA	YOWIE BAY
RAMSGATE BEACH	ST LEONARDS	WAREEMBA	
RANDWICK	ST PETERS	WARRAWEE	
REDFERN	STANMORE	WARRIEWOOD	
RHODES	STRATHFIELD	WATERFALL	
RIVERVIEW	STRATHFIELD SOUTH	WATERLOO	
ROCKDALE	SUMMER HILL	WATSONS BAY	
RODD POINT	SURRY HILLS	WAVERLEY	
ROSE BAY	SUTHERLAND	WAVERTON	

Sydney South West catchment – suburb list

ABBOTSBURY	CARRAMAR	HOLSWORTHY	PLEASURE POINT	YAGOONA
ASHCROFT	CARTWRIGHT	HORNINGSEA PARK	POTTS HILL	YENNORA
AUSTRAL	CECIL HILLS	HORSLEY PARK	PRAIRIEWOOD	
BADGERYS CREEK	CECIL PARK	HOXTON PARK	PRESTONS	
BANKSTOWN	CHESTER HILL	KINGSGROVE	PUNCHBOWL	
BANKSTOWN AERODROME	CHIPPING NORTON	LAKEMBA	REGENTS PARK	
BASS HILL	CHULLORA	LANSDOWNE	REVESBY	
BELFIELD	CLEMTON PARK	LANSVALE	REVESBY HEIGHTS	
BELMORE	CONDELL PARK	LEN WATERS ESTATE	RIVERWOOD	
BERALA	EAST HILLS	LIVERPOOL	ROSELANDS	
BEVERLY HILLS	EDENSOR PARK	LUDDENHAM	ROSSMORE	
BEXLEY	ELIZABETH HILLS	LURNEA	SADLEIR	
BEXLEY NORTH	FAIRFIELD	MERRYLANDS	SANDY POINT	
BIRRONG	FAIRFIELD EAST	MERRYLANDS WEST	SEFTON	
BONNYRIGG	FAIRFIELD HEIGHTS	MIDDLETON GRANGE	SMITHFIELD	
BONNYRIGG HEIGHTS	FAIRFIELD WEST	MILLER	ST JOHNS PARK	
BOSSLEY PARK	GEORGES HALL	MILPERRA	VILLAWOOD	
BRINGELLY	GREEN VALLEY	MOOREBANK	VOYAGER POINT	
BUSBY	GREENACRE	MOUNT LEWIS	WAKELEY	
CABRAMATTA	GREENFIELD PARK	MOUNT PRITCHARD	WARWICK FARM	
CABRAMATTA WEST	GUILDFORD	NARWEE	WATTLE GROVE	
CAMPSIE	GUILDFORD WEST	OLD GUILDFORD	WEST HOXTON	
CANLEY HEIGHTS	HAMMONDVILLE	PADSTOW	WETHERILL PARK	
CANLEY VALE	HECKENBERG	PANANIA	WILEY PARK	
CARNES HILL	HINCHINBROOK	PICNIC POINT	WOODPARK	

Sydney West catchment – suburb list

ACACIA GARDENS	CATTAI	EMERTON	HOLROYD	LOWER PORTLAND
AGNES BANKS	CENTRAL COLO	EMU HEIGHTS	HOME BUSH WEST	MACQUARIE PARK
ANNANGROVE	CENTRAL MACDONALD	EMU PLAINS	HUNTINGWOOD	MARAYLYA
ARNDELL PARK	CLAREMONT MEADOWS	EPPING	JAMISONTOWN	MARAYONG
AUBURN	CLARENDON	ERMINGTON	JORDAN SPRINGS	MARROOTA
BAULKHAM HILLS	CLYDE	ERSKINE PARK	KELLYVILLE	MARSDEN PARK
BEAUMONT HILLS	COLEBEE	FERNANCES	KELLYVILLE RIDGE	MARSFIELD
BELLA VISTA	COLO	FREEMANS REACH	KEMPS CREEK	MAYS HILL
BERKSHIRE PARK	COLYTON	GIRRAWEE	KENTHURST	MCGRATHS HILL
BIDWILL	CONSTITUTION HILL	GLEN DENNING	KINGS LANGLEY	MEADOWBANK
BLACKETT	CORNWALLIS	GLENHAVEN	KINGS PARK	MELROSE PARK
BLACKTOWN	CRANE BROOK	GLENMORE PARK	KINGSWOOD	MIDDLE DURAL
BLAXLANDS RIDGE	CUMBERLAND REACH	GLENORIE	KURMOND	MINCHINBURY
BLIGH PARK	DEAN PARK	GLENWOOD	KURRAJONG	MOUNT DRUITT
BOWEN MOUNTAIN	DENISTONE	GLOSSODIA	KURRAJONG HEIGHTS	MOUNT RIVERVIEW
BOX HILL	DENISTONE EAST	GRANVILLE	KURRAJONG HILLS	MOUNT VERNON
BUNGARRIBEE	DENISTONE WEST	GREENDALE	LALOR PARK	MOUNTAIN LAGOON
CADDENS	DHARRUK	GREYSTANES	LAUGHTONDALE	MULGOA
CAMBRIDGE GARDENS	DOONSIDE	GROSE VALE	LEETS VALE	MULGRAVE
CAMBRIDGE PARK	DUNDAS	GROSE WOLD	LEONAY	NELSON
CAMELLIA	DUNDAS VALLEY	GUNDERMAN	LETHBRIDGE PARK	NEWINGTON
CANOELANDS	EAST KURRAJONG	HARRIS PARK	LIDCOMBE	NORTH KELLYVILLE
CARLINGFORD	EASTERN CREEK	HASSALL GROVE	LLANDILO	NORTH PARRAMATTA
CASTLE HILL	EASTWOOD	HEBERSHAM	LONDONDERRY	NORTH RICHMOND
CASTLEREAGH	EBENEZER	HOBARTVILLE	LOWER MACDONALD	NORTH ROCKS

Sydney West catchment – suburb list

NORTH ST MARYS	ROPES CROSSING	TEN MILE HOLLOW	WINDSOR
NORTHMEAD	ROSEHILL	TENNYSON	WINDSOR DOWNS
NORWEST	ROUSE HILL	THE PONDS	WINSTON HILLS
OAKHURST	RYDALMERE	THE SLOPES	WISEMANS FERRY
OAKVILLE	SACKVILLE	TOONGABBIE	WOMERAH
OATLANDS	SACKVILLE NORTH	TREGEAR	WOODCROFT
OLD TOONGABBIE	SCHEYVILLE	UPPER COLO	WRIGHTS CREEK
ORCHARD HILLS	SCHOFIELDS	UPPER MACDONALD	YARRAMUNDI
OXLEY PARK	SEVEN HILLS	UPPER MANGROVE	YELLOW ROCK
PARKLEA	SHALVEY	VINEYARD	
PARRAMATTA	SHANES PARK	WALLACIA	
PEMULWUY	SILVERDALE	WARRAGAMBA	
PENDLE HILL	SILVERWATER	WEBBS CREEK	
PENRITH	SINGLETONS MILL	WENTWORTH POINT	
PITT TOWN	SOUTH GRANVILLE	WENTWORTHVILLE	
PITT TOWN BOTTOMS	SOUTH MAROOTA	WERRINGTON	
PLUMPTON	SOUTH PENRITH	WERRINGTON COUNTY	
PROSPECT	SOUTH WENTWORTHVILLE	WERRINGTON DOWNS	
QUAKERS HILL	SOUTH WINDSOR	WEST PENNANT HILLS	
REGENTVILLE	ST ALBANS	WEST RYDE	
RICHMOND	ST CLAIR	WESTMEAD	
RICHMOND LOWLANDS	ST MARYS	WHALAN	
RIVERSTONE	STANHOPE GARDENS	WHEENY CREEK	
ROOKWOOD	SYDNEY OLYMPIC PARK	WILBERFORCE	
ROOTY HILL	TELOPEA	WILLMOT	

Tab B – Existing catchments

There are no standardised geographical boundaries used for service planning across the legal assistance sector, by the broader Justice sector or by other NSW Government agencies.

Legal Aid NSW catchments

Legal Aid adopted the regional catchments that were consulted and agreed upon by the NLAJ Working Group in August 2019.

The CLSD Program, administered by Legal Aid NSW, comprises twelve justice partnerships in regional and remote NSW. Further information about the CLSD Program regions is attached below.

Legal Aid NSW also uses Law Society of NSW regions for the allocation of work to private panel practitioners.

CLC catchments

In October 2017, the LJF was asked by CLCNSW to map the catchment regions of generalist CLCs in NSW based on directory data, to form part of a submission to the Cameron Review of CLC funding.

These catchments were included in the Evidence of Legal Need in NSW, to support the Cameron Review Implementation, published by the LJF in September 2018. Further detail about the CLC catchments is below.

ALS catchments

In 2018, the ALS approached the LJF to explore options for:

- studying and mapping the geographic distribution of matters coming before the different types of courts across NSW
- analysing and reporting on how data might be used to assess demand for services and assist with service planning.

The LJF developed a tool to help the ALS plan to meet demand for their criminal law services. Further detail about the ALS catchments is below.

Other government agency catchments

Boundaries used by the Department of Premier and Cabinet, Family and Community Services, Health NSW and NSW Education closely align. There are further similarities in the Local Government Areas (LGAs) that form the metropolitan and regional boundaries for each of those agencies.

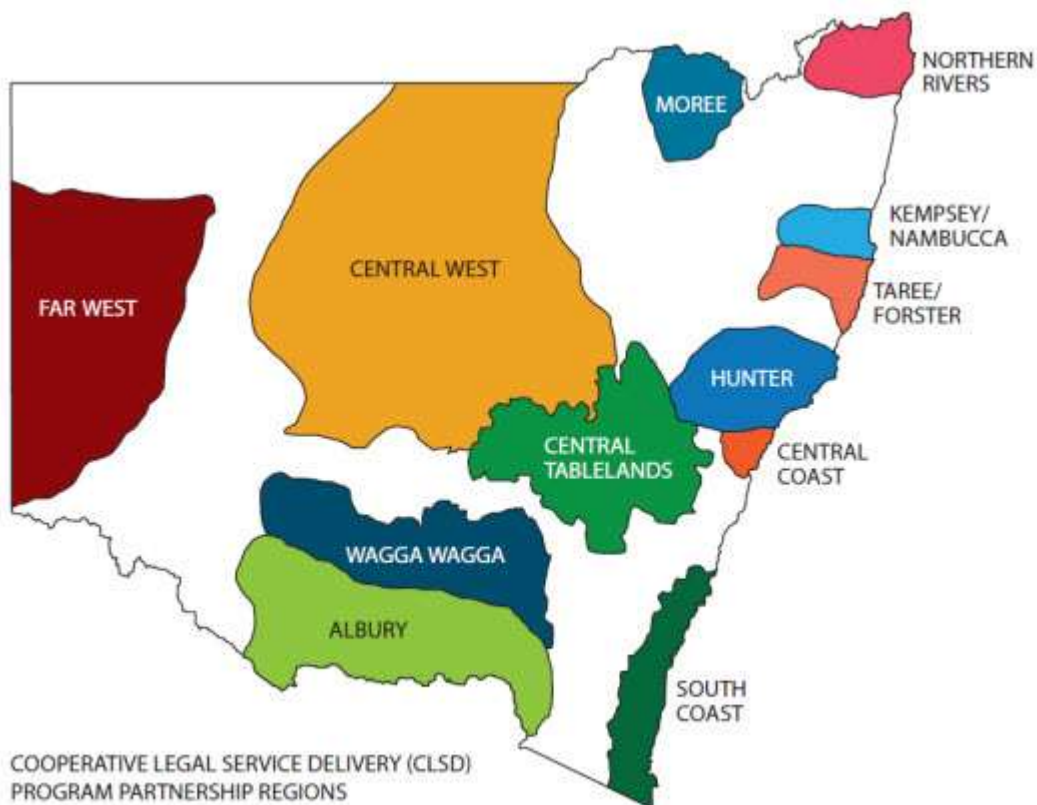
The NSW Police Force, Courts and Tribunals NSW and Corrective Services NSW have not aligned their boundaries with the Department of Premier and Cabinet's boundaries, and have not aligned themselves to each other's boundaries.

Cooperative Legal Service Delivery (CLSD) Program

The CLSD Program supports 12 regional justice partnerships in regional and remote NSW that address unmet legal need and work collaboratively to plan services and achieve better outcomes for vulnerable and disadvantaged people.

CLSD Program partnerships are located in the following regions:

- Moree
- Northern Rivers
- Kempsey/Nambucca
- Taree/Forster
- Hunter
- Central Coast
- South Coast
- Wagga Wagga
- Albury
- Central Tablelands
- Central West
- Far West



CLC catchments

In October 2017, the LJF was asked by CLCNSW to map the catchment regions of generalist CLCs in NSW based on directory data to form part of a submission to the NSW Department of Justice Cameron Review of CLCs.

Between October and December 2017, the LJF undertook a process of feeding the directory data into geographic information software to map the catchments. Feedback was provided to the LJF from CLCNSW as centres were consulted. The finalised maps were provided to CLCNSW and the NSW Department of Justice in December 2017.

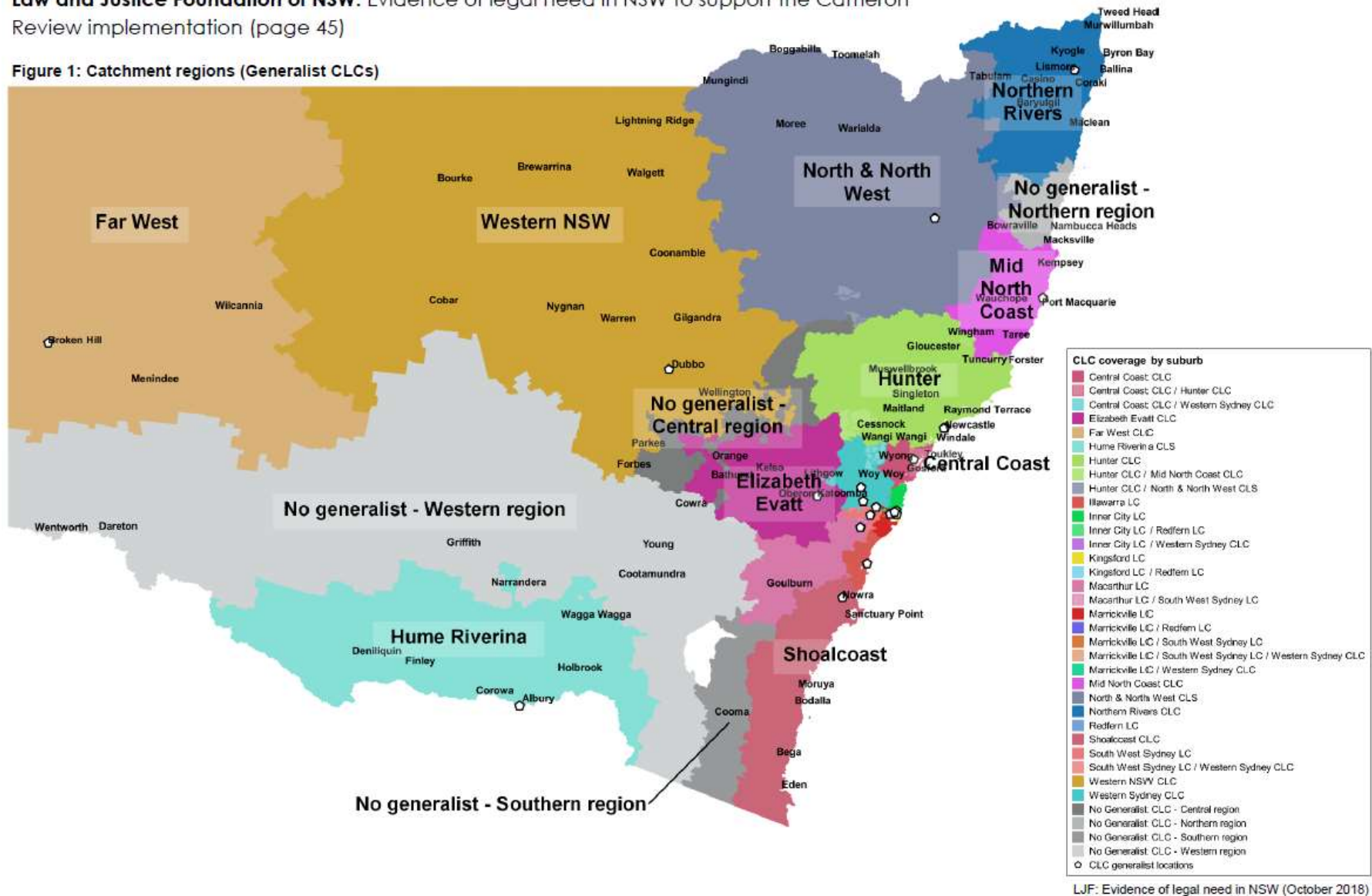
In early August 2018, these catchment regions were once again circulated to CLCs by CLCNSW and feedback was provided to the LJF. No further changes were made to catchment regions after 10 August 2018. The catchments include:

- Central Coast
- Elizabeth Evatt
- Far West
- Hume Riverina
- Hunter
- Illawarra
- Inner City
- Kingsford
- Macarthur
- Marrickville
- Mid North Coast
- North and North West
- Northern Rivers
- Redfern
- Shoalcoast
- South West Sydney
- Western NSW

While the catchment regions are relevant for generalist CLCs providing 'generalist' legal assistance services within these catchments, specialist services are provided state wide in specific areas of law, or targeting specific priority groups, by specialist CLCs and a number of generalist CLCs.

The catchment regions are based on the Australian Bureau of Statistics State Suburbs. Where suburbs were covered by more than one CLC, the data was split evenly to avoid double counting. These regions may not necessarily align precisely with the communication of individual CLC 'catchments' for local audiences but represent agreed catchment areas for the funding process. It is possible that future iterations of the funding process may use alternative geographic 'catchments', to better align with collaborative planning purposes. Thus, it is anticipated that future work will be required to refine regions and to continue to develop the evidence base.

Figure 1: Catchment regions (Generalist CLCs)



The table below sets out the CLCs based on suburb and categories - Specialist (S) and Generalist (G).

Name of CLC	Suburb	S/G
Animal Defenders Office	Civic (ACT)	S
Arts Law Centre of Australia	Woolloomooloo	S
Australian Centre for Disability Law	Advice Line	S
Australian Pro Bono Resource Centre	Kensington	S
Central Coast CLC	Wyong	G
Elizabeth Evatt CLC	Katoomba	G
Environmental Defenders Office NSW	Sydney	S
Far West CLC	Broken Hill	G
Financial Rights Legal Centre	Advice Line	S
HIV/AIDS Legal Centre	Surry Hills	S
Human Rights Law Centre	Sydney	S
Hume Riverina CLC	Wodonga (VIC)	G
Hunter CLC	Newcastle	G
Illawarra Legal Centre	Warrawong	G
Immigration Advice and Rights Centre	Sydney	S
Inner City Legal Centre	Kings Cross	G
Intellectual Disability Rights Service	Redfern	S
Justice Connect	Advice Line	S
Kingsford Legal Centre	Kensington	G
Macarthur Legal Centre	Campbelltown	G
Marrickville Legal Centre	Marrickville	G
Mid North Coast CLC	Port Macquarie	G
National Children's and Youth Law Centre	Kensington	S
North and North West CLC	Armidale	G
Northern Rivers CLC	Lismore	G
Public Interest Advocacy Centre	Sydney	S
Redfern Legal Centre	Redfern	G
Refugee Advice and Casework Service	Randwick	S
Senior Rights Service	Surry Hills	S
Shoalcoast CLC	Nowra	G
South West Sydney Legal Centre	Liverpool	G
Tenant's Union of NSW	Surry Hills	S
University of Newcastle Legal Centre	Newcastle	G
Welfare Rights Centre	Surry Hills	S
Western NSW CLC	Dubbo	G
Western Sydney CLC Parramatta	Parramatta	G
Western Sydney CLC Rooty Hill	Rooty Hill	G
Western Sydney CLC Windsor	Windsor	G
Wurringa Baiya Aboriginal Women and Children's Legal Centre	Marrickville	S
Women's Legal Service NSW	Advice Line	S

ALS catchments

The LJF has developed a new database for the ALS to assist with planning their criminal law practice services.

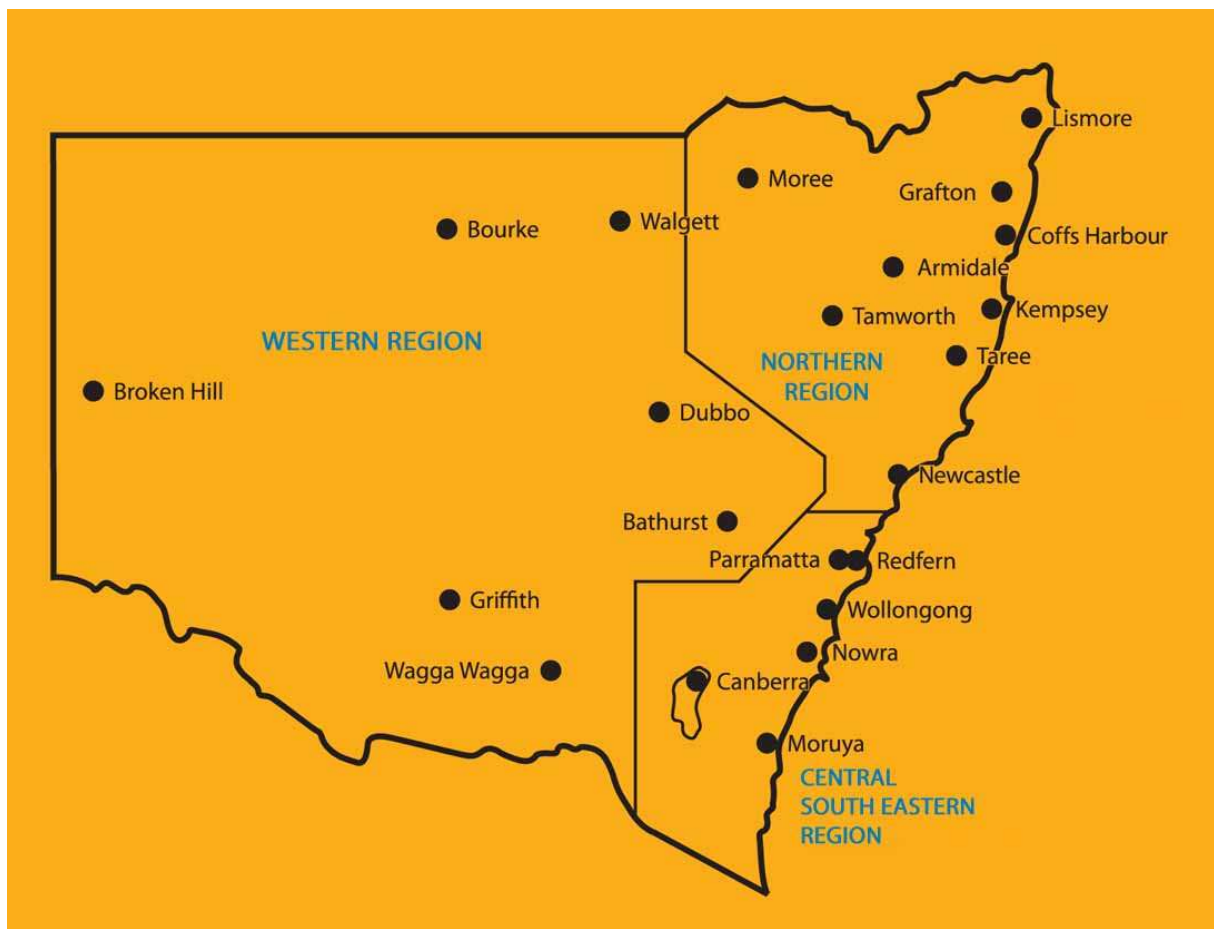
In 2018, the Aboriginal Legal Service (NSW/ACT) Ltd approached the Foundation to explore options for:

- studying and mapping the geographic distribution of matters coming before the different types of courts across NSW
- analysing and reporting on how data might be used to assess demand for services and assist with service planning.

The Foundation sourced Criminal Court statistics on finalised matters with Aboriginal defendants from BOCSAR to develop a proxy to indicate potential demand for ALS Criminal Law Practice services in NSW. The data was processed to create a database and generate maps.

The tool can be used to display the number of finalised matters (and changes across the five years) by court type (Local, District, Children's) and court location in NSW. You can also search by ALS Office, or by ALS Region or ALS cluster. The purpose of the tool is to help the ALS plan to meet demand for their Criminal Law Practice services.

Data is available from Tableau Public. No software is required to access the Tableau dashboards.



TAB C - NPA requirements

The NPA provides Commonwealth funding to states and territories to distribute to legal aid commissions and community legal centres. The objective of the NPA is a national legal assistance sector that is integrated, efficient and effective, focused on improving access to justice for disadvantaged people and maximising service delivery within available resources.

The NPA requires states to undertake collaborative service planning to improve coordination between service providers in the planning and delivery of services. There are two key elements of collaborative service planning:

- the states use an evidence base to identify priority clients and the geographic locations in which people have the highest levels of legal need, and
- the states will conduct collaborative service planning meetings to promote discussion of strategies for the delivery of services within their jurisdiction.

Using evidence and analysis of legal need, collaborative service planning meetings should consider, at a minimum:

- the different locations of services delivered by legal aid commissions, community legal centres and Indigenous legal assistance providers within the jurisdiction
- the mix of legal assistance services available
- strategies to achieve proportionate services response – for example that, where practicable, services are appropriate to clients' legal needs and levels of capability
- the coordination of community legal education at a State level, and
- the efficiency and effectiveness of service delivery models.

ILAP requirements

The ILAP funds organisations to deliver culturally appropriate legal assistance services to Aboriginal and Torres Strait Islander people. The objective of the ILAP is to ensure Indigenous people are able to access justice and exercise their rights in the same way as other Australians.

The ILAP requires Indigenous legal assistance providers to work collaboratively with state and territory agencies and other legal assistance providers including legal aid commissions and community legal centres to enhance coordinated service delivery across the sector.